

SWECO CATALOG



SWECO® **FAB**
INC.

A WHOLLY OWNED SUBSIDIARY OF **Piping Technology & Products, Inc.**

www.sweco.com

www.pipingtech.com

ABOUT SWECO FAB, INC.	1
PRODUCT LINE	2
SERVICES	5
FEATURE PRODUCT:	
PIG LAUNCHER	6
DETAIL INFORMATION	7
PRODUCT TESTING	9
REQUIREMENTS	11
STANDARD SPECIFICATIONS	12
STANDARD DRAWINGS	13
TYPICAL TRAP DESIGN	14
PAST PIG LAUNCHERS & RECEIVERS	15
SWECO FAB PRODUCTS	18
CONTACT SWECO FAB, INC.	19



Sweco Fab, Inc., an ASME Code fabricator and machine shop, is a wholly owned subsidiary of Piping Technology and Products, Inc. Sweco Fab manufactures various products including:

- pressure vessels
- tanks
- bellmouth reducers
- instrument supports
- strainers
- pig launchers & receivers
- duct and transition pieces
- spectacle blinds and drip rings
- orifice plates and flanges



ENGINEERING

Engineering and designs are done per ASME Section VIII, division 1. Sweco Fab/PT&P has full in-house finite element analysis capabilities. Our experienced engineers use this methodology to prove designs. Sweco Fab/PT&P offers 24-hour service and provides emergency field service during installation or plant shutdowns.

FACILITIES

Sweco Fab/PT&P is located on a 30 acre property in Houston, Texas, USA, within more than 450,000 square feet of covered shop space (approximately 10 acres). Our proximity to the Houston Ship Channel, one of the largest ports in the United States and in the world, makes us a convenient supplier to projects around the world. PT&P recently completed the construction of a 100,000 square foot expansion to our manufacturing plant and we continue to grow. We invite you to visit our manufacturing facility and give us the opportunity to demonstrate our engineering and manufacturing capabilities to you.



Sweco Fab, Inc., an ASME Code fabricator and machine shop, is a wholly owned subsidiary of Piping Technology and Products, Inc. Sweco Fab, Inc., designs and fabricates different kinds of pressure vessels per ASME Sec. VIII, Div. I, welded steel tanks per API codes, bellmouth reducers, pig launchers and receivers, instrument supports, conical strainers, duct/transition pieces, spectacle and line blinds, orifice plates/flanges and dampers and louvers.

 ASME CODE PRESSURE VESSELS/TANKS



 PIG LAUNCHERS AND RECEIVERS



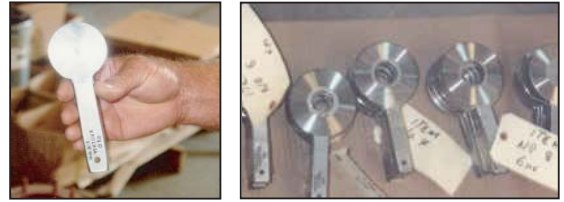
 BELLMOUTH REDUCERS



Instrument Supports



Orifice Plates



Duct and Transition Pieces



Conical Strainers



Dampers and Louvers



Spectacle Blinds



SWECO VESSELS & TANKS





SWECO FAB

Stress Analysis

Sweco Fab, Inc. has extensive in-house finite element analysis capabilities using ProEngineer, ANSYS and a variety of other software packages.

Product Testing

Sweco Fab's quality team has extensive experience in different types of product testing including: Burst Testing, Hydro Testing, Liquid Penetrant testing.

24x7 Quick-turn/Emergency Services

Sweco Fab's "on-call" engineering team is available on a 24 x 7 basis to fulfill any emergency requirements that might arise.

On-site Services

Sweco Fab's field services team has extensive experience providing on-site inspection, installation and maintenance guidance.

Drafting Services

Sweco Fab's experienced drafting team can provide custom drafting services - electronic transmission of drawings - to meet your engineering and construction needs.

Online Order Status

Using Sweco Fab's Customer Desktop, you can check the shipping status of your projects and jobs from anywhere in the world, at anytime of day or night.

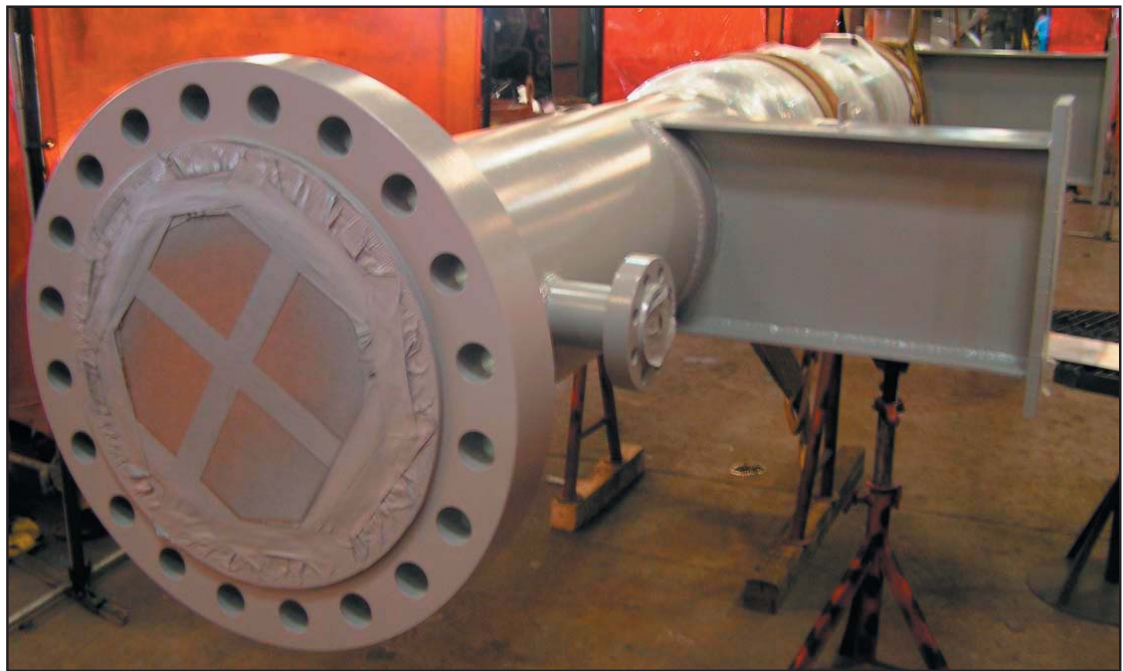
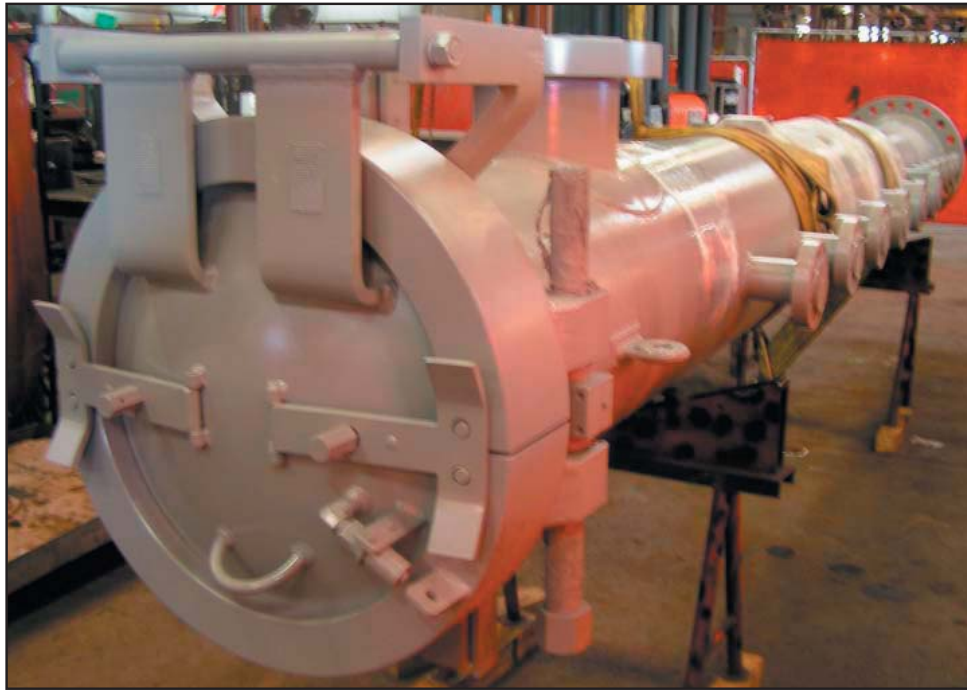
Sweco Fab, Inc. manufactured a pig launcher and receiver for an exploration oil company and were shipped to the company's plant in Nigeria. They are used to launch a cleaning pig throughout the piping system to clean the pipeline. Each was hydro tested to assure quality and performance. The pig launcher was painted with mutiple coats for environment protection. Both units were specifically designed per customer's request to withstand certain pressure and temperatures.



Pig Receiver in preparation for Hydro Testing



Pig Launcher ready for shipment.



Pig Launcher: 20" x 24"

Materials: Carbon Steel API 5L x 60
Dimensions: Length = 272"
Weight: 5,873 lbs
Pressure: 1,700 PSIG
Temperature: Minimum = -28°F
Maximum = 200°F



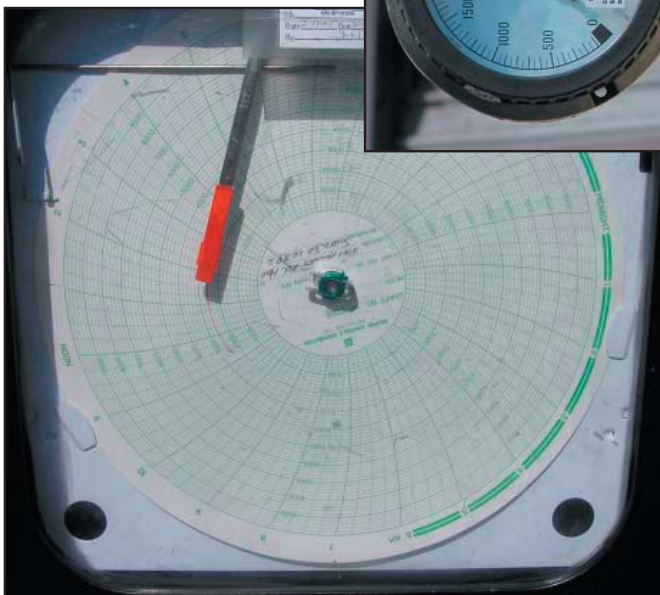
Pig Launcher: 18" x 24"

Materials: Carbon Steel API 5L x 60
Dimensions: Length = 335"
Weight: 12,716 lbs
Pressure: 3,258 PSIG
Temperature: Minimum = -58°F
Maximum = 200°F



Hydro testing was performed on both the pig launcher and receiver. Each unit is filled with water and then the pressure is steadily increased until it reaches the specified pressure. With such high pressure testing, a flow meter tracked the pressure during the four hours of testing.

Pressure Gauges → →



← ← Flow Meter tracking pressure during hydro testing.



Hydro Testing of Pig Receiver →→

The pig receiver was also hydro tested to check for leaks at various pressures.



←← Pressure Gauges during testing

CODE: ASME Sect. VIII Div.1. , (Is Stamp required)
 ASME B31.4 (Liquid transmission)
 ASME B31.8 (Gas transmission)

DESIGN:

PSIG	Operating PSIG/Temp.
Temp	NACE Requirement
Corrosion Allowance	Flange (ANSI Class)
Design Factor (B31.8)	Line size & wall thickness & Grade of material

PIG SIGNALER: 1. Required yes/no
 2. If required, type (Mechanical, electrical)
 (Mfg. Preference)

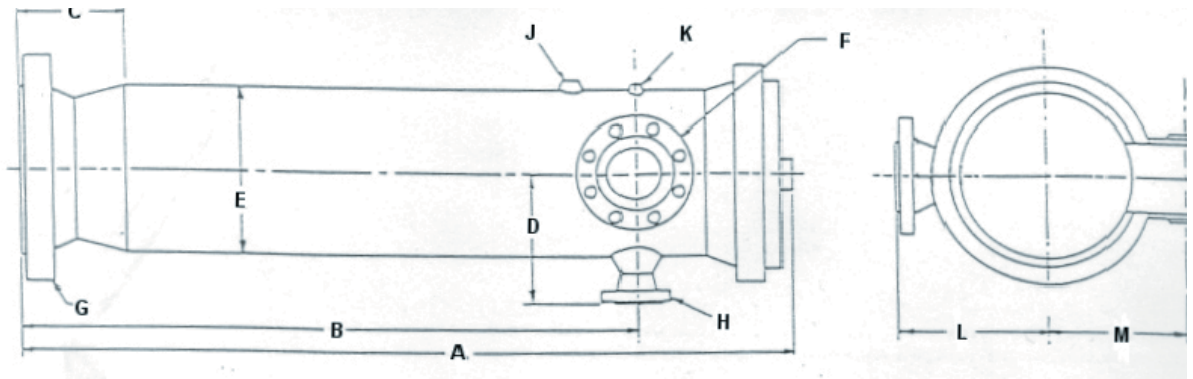
END CLOSURE: (Is there a Manufacture Preference)

- Length of pig to be used.
- Kicker or bypass size.
- Any other special requirements, such as paint (our standard is Red Oxide Primer), supports, etc.
- Customer provides a drawing or sketch (if possible).

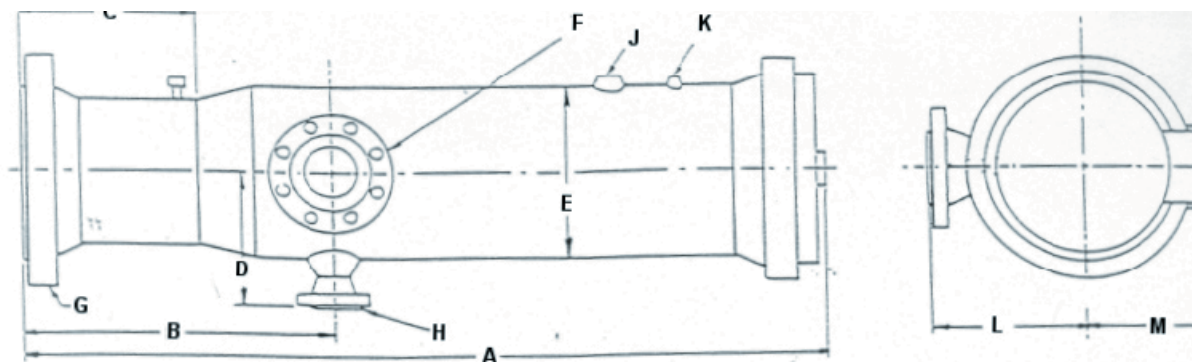


SWECO FAB

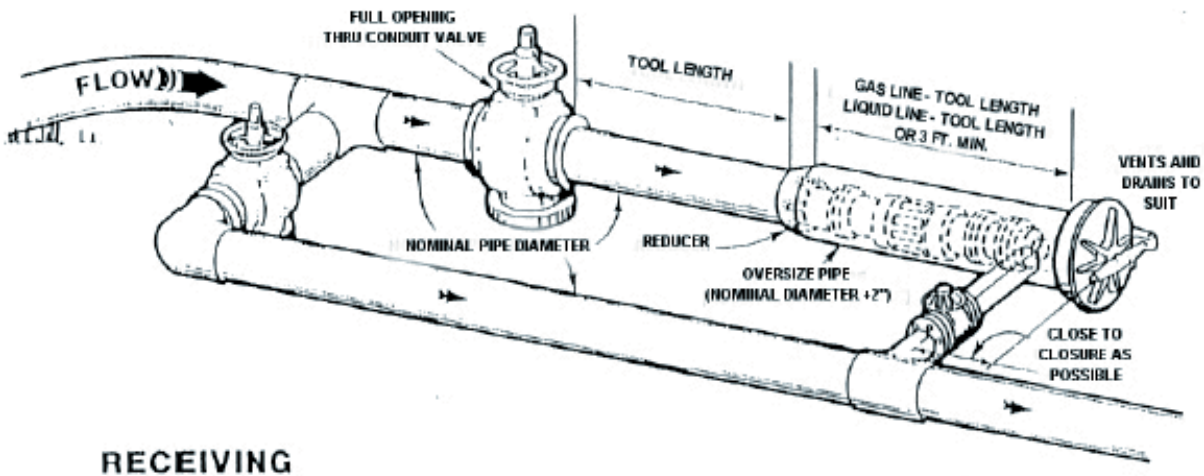
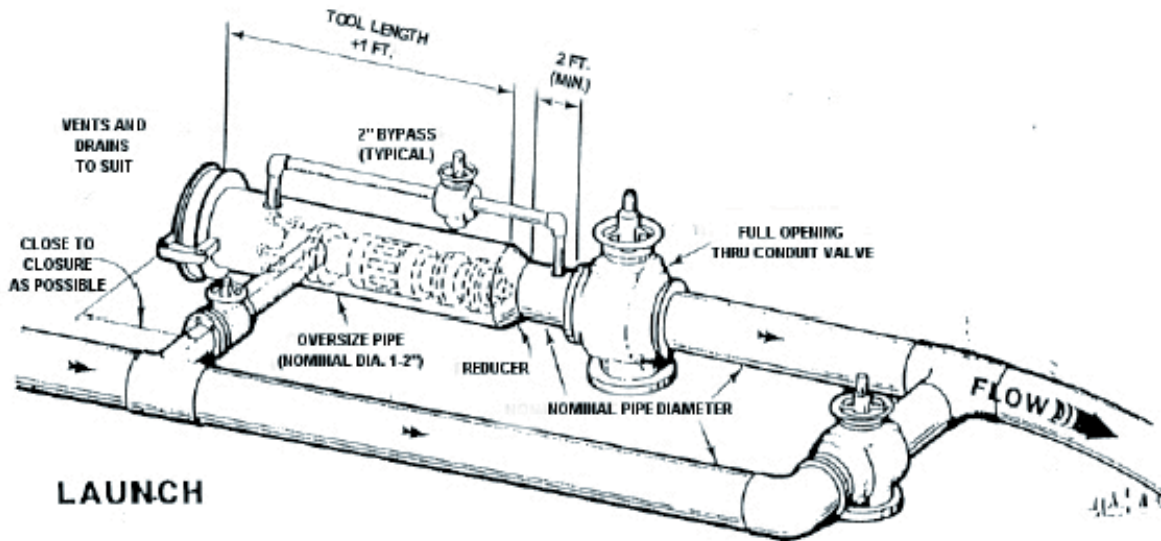
DESIGN CODE	ASME Section VIII, Div. 1 ANSI B31.4 (Liquid Pipelines) ANSI B31.8 (Gas Pipelines)
PRESSURE RATING:	ANSI Class 150 through 1500
WELDING CODE:	ASME IX
WELDING INSPECTION:	ASME Section V
OUTLETS / INLETS:	Bypass / Kicker Drain Vent Gauge
CLOSURE:	Tube Turn Huber Yale Modco GD
BODY MATERIAL:	Pipe: A-106, API 5L, API High Yield Plate: A-516 Gr. 70
FORGINGS:	A-105 / A-350-LF2
FITTING:	A-234-WPB / A-234-WPC
HYDRO TEST:	1.3 X MAWP for 4 hours (1 hour, ASME)
SUPPORTS:	Not Included (Optional)
FINISH:	Sandblasted and Primed



Standard Pig Launcher



Standard Pig Receiver





PT&P Ref #00286 9/20/02

Sweco Fab, Inc. Designs and Manufactures Scraper Launchers and Receivers for an Oil and Gas Exploration and Production Company in Venezuela

The launchers and receivers are designed with a 6" line and 8" barrel at 60" long with a 4" kicker, 3/4 in. P.I., 2" vent and drain design per ASME B31.4. They are made to withstand 1480 PSIG at 100° F and can accommodate 15" pigs. They were painted inside and out per System 6E gray color and included simple skid, MTR, N.D.E., and flange protectors.

Scraper Launchers And Receivers For Separation Project

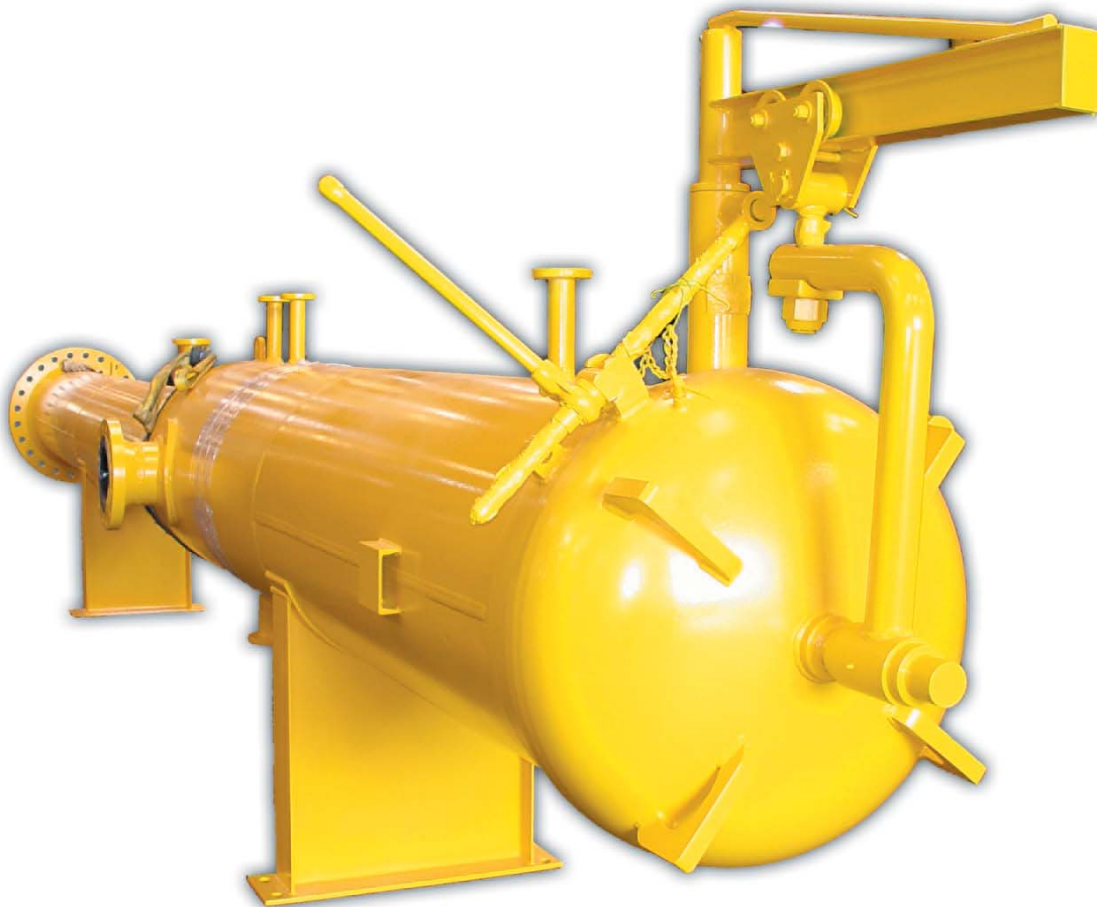
Sweco Fab, Inc. manufactured eight 8" and four 10" scraper launchers and receivers for a separation project off the West Coast of Africa. The products were immediately put to use for placement and removal of pigs. These launchers and receivers were designed with quick opening doors and R.T.J flanges at 2300 PSIG, built to ASME, Sect. VIII, Div. 1 and D.N.V. inspected.



PT&P 7/26/01

Sweco Fab, Inc. Designs and Fabricates 24" x 30" diameter, 740 PSIG Scraper Launchers and Receivers for a Plant in Mexico.

The launchers and receivers, with dimensions of 24" x 30" x 138" long and 10" x 14" x 132" long, are designed for 740 PSIG at 170 degrees. One of the Scraper Launchers and Receivers composed of a 24" dia. minor barrel and a 30" dia. major barrel, while the other one consisted of a 10" dia. minor barrel and a 14" dia. major barrel. The major and minor barrels are fabricated from API 5L X 52. To ensure quality, the Launchers and Receivers were 100 % x-rayed and hydro-tested prior to shipment.



PT&P Ref # 00495 - 04/22/05

Sweco Fab, Inc. Fabricates a 24" x 30" diameter, 1480 PSIG Scraper Receiver with Saddle Supports

Sweco Fab, Inc. recently fabricated a Scraper Receiver Class 600 with saddle supports for an industrial company in Texas. The scraper receiver is composed of a 24" dia. minor barrel and a 30" dia. major barrel with 1" thick walls. It is approximately 250" in length and weighs 8,200 lb. The major and minor barrels are fabricated from API-5LX42 material. All other items are fabricated from SA105, SA106B, and SA-36 as applicable. The receiver is designed per ASME B31.8 with a 0.72 Design Factor and NACE MP-01-75. The design pressure is 1480 PSIG at 125°F.



PT&P Ref #00435 - 06/04/04



SWECO FAB

ADDITIONAL SWECO FAB PRODUCTS



**ASME Code
Pressure Vessels/Tanks**



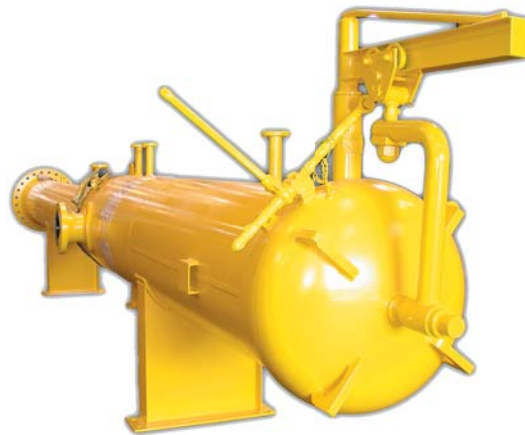
Bellmouth Reducer



Instrument Stands



Orifice Plates



**Swegee Pigs
Pig Launchers & Receivers**



**Spectacle & Line
Blinds**



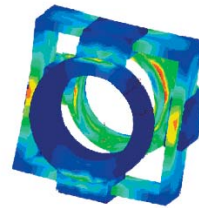
Conical Strainers



Duct & Transition Pieces



Dampers / Louvers



Finite Element Analysis

SWECO FAB, INC.

PHONE: (713) 731-0030

TOLL FREE: (800) 787-5914

ADDRESS: 3701 HOLMES ROAD
HOUSTON, TX 77051

SHIPPING: P.O. BOX 34506
HOUSTON, TX 77234-4506

WEBSITE: WWW.SWECOFAB.COM

E-MAIL: INFO@MAIL.PIPINGTECH.COM

PRODUCTS MANUFACTURED BY PIPING TECHNOLOGY & PRODUCTS, INC.

- EXPANSION JOINTS:
 - Metal Bellows
 - Fabric
 - Slip Type
 - Thick Wall
 - Thin Wall
- VARIABLE SPRING HANGERS
- CONSTANT SUPPORTS
- BIG TONS
- SNUBBERS, SWAY BRACES, SWAY STRUTS
- PIPE HANGER HARDWARE, CLAMPS, RODS
- SLIDE BEARING PLATES
- MISCELLANEOUS STEEL FABRICATION
- FABRICATED PIPE SHOES, GUIDES, ANCHORS
- INSTRUMENT SUPPORTS
- PIPELINE "SCRAPER", LAUNCHERS & RECEIVERS
- PRE-INSULATED PIPE SUPPORTS/SHOES:
 - HOT/COLD
- "HIGH TEMP" FURNACE BAGS
- ANCHOR BOLTS/EMBEDS
- BELLMOUTH REDUCERS
- STRESS ANALYSIS, FEA, 3D MODELING
- FIELD SERVICE: INSPECTION, MAINTENANCE & TRAINING
- PRODUCT TESTING



SWECO FAB

PROVIDING PRODUCTS AND SERVICES FOR ALL YOUR ENGINEERING & CONSTRUCTION NEEDS